

STANDARD SUPPORT STAND

Placer Waterworks Inc.

1327 Furneaux Road
 Plumas Lakes, CA. 95961
 (530) 742-9675

3/4" Solid
 Steel Dowel

1-3/8" Nut Welded to
 Althread and 3/4" Dowel

Zinc Plated 1-3/8"Ø AllThread
 Coated with Anti-Seize

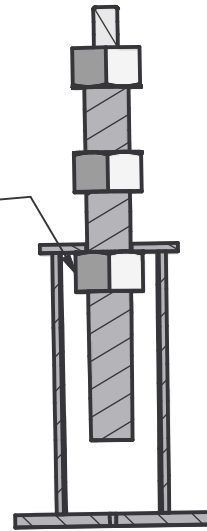
1-3/8" Locking Nut

3/16" Plate 4-1/4" O.D.
 w/1-3/4" Hole

3" Schedule
 40 Riser Pipe

1-3/8" Steel Nut welded
 to bottom of 3/16" Plate

3/8" x 6" x 6" Steel
 Base Plate w/ (3) 1/2"Ø Holes
 (one hole is interior drain hole)



NOTE:

1. The Base, Rise and 3/16" x 4-1/4" O.D. Plate are all welded together
 (All weldind done per AWS Specifications)
2. Corrosion Protection options:
 1. The Entire Support is made of Steel and sealed with Pittsburg Paint Product 95-9112 Series (Black) 68% Weight Solids ± 2%
 2. Powder Coating
 3. Hot Dipped Galvanized
3. Standard Supports come in Four Sizes
4. Custom made to fit Supports of any size can be fabricated.

Product Code	Height Adustment	Weight
PW/PS1014	10" to 14"	10lbs
PW/PS1218	12" to 18"	13lbs
PW/PS1624	16" to 24"	16lbs
PW/PS2436	24" to 36"	22lbs

DESTRUCTIVE TESTING
 Showed support capacity of
 48,000lbs concentric vertical
 load WITH-OUT noticeable
 deformation

CAT#:Custom: (S = Painted - Z = HDG)

1/29/2009