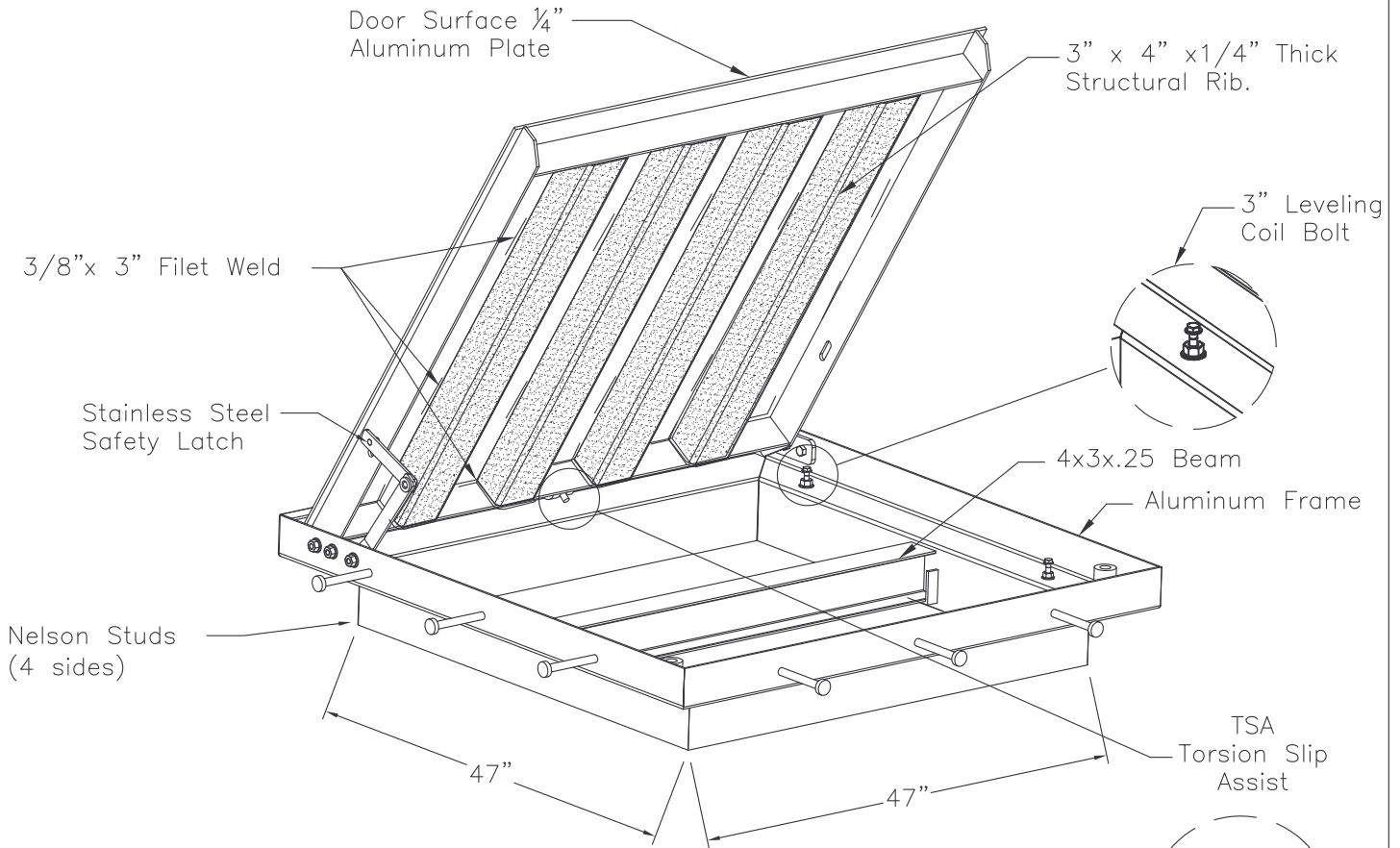


DIRECT TRAFFIC RATED ALUMINUM VAULT COVER

Placer Waterworks, Inc.
9522 Antelope Oaks Court
Roseville, CA 95747
(916) 773-2959



NOTE:

- *Destructive Testing on a 48" Span (with-out the removeable I Beam 4x9.5) Under a load of 29,000lbs. Deflection measured $\frac{7}{16}$ ". Remove the load to measure, permanent deflection of $\frac{1}{8}$ ".
- *TSA Spring Steel Torsion has life time replacement warranty.
- *Door Surface is $\frac{1}{4}$ " Diamond Floor Plate Grade 6061-T6.
- *3/8" Structural Fillet Welds, 3" Long in four locations on each side of Supporting Ribs and Rails.
- *Bolt Down Security is $\frac{3}{8}$ " x 2" Stainless Steel Penta Head fasteners.

PW/R271-DB